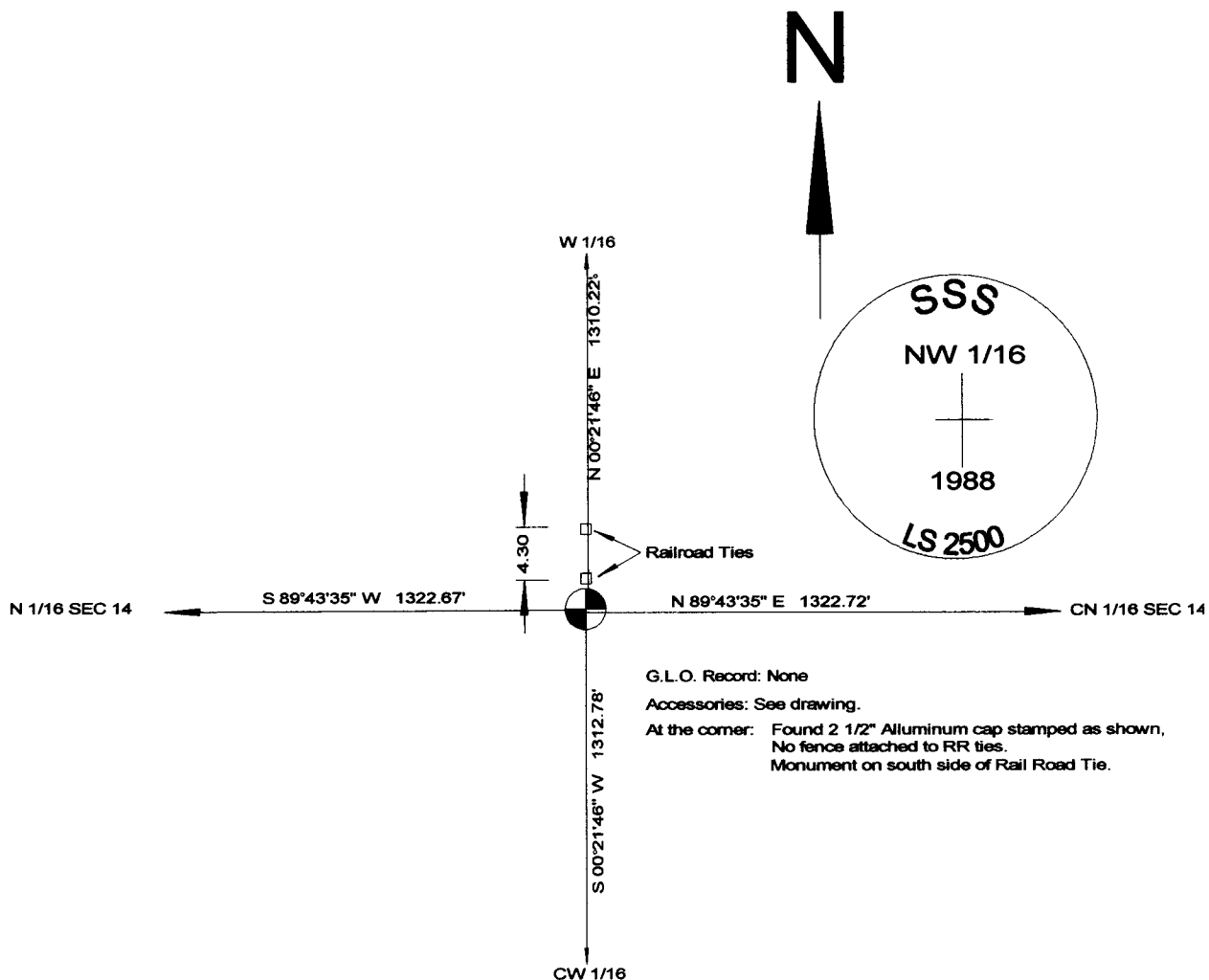


State of Wyoming Corner Record

(In compliance with the *CORNER PERPETUATION AND FILING ACT*, Wyoming Statutes, 1997, Section 33-29-140 et. seq., and the Rules and Regulations of the Board of Registration for Professional Engineers and Professional Land Surveyors)

Reverse side of this form may be used if more space is needed.

Record of original survey and citation of source of historical information (if corner is lost or obliterated). Description of corner monumentation evidence found and/or monument and accessories established to perpetuate the location of this corner. Sketch of relative location of monument, accessories, and reference points with course and distance to adjacent corner(s) (if determined in this survey). Method and rationale for reestablishment of lost or obliterated corner.



G.L.O. Record: None
 Accessories: See drawing.
 At the corner: Found 2 1/2" Aluminum cap stamped as shown,
 No fence attached to RR ties.
 Monument on south side of Rail Road Tie.

RECORDED 3/05/2001 AT 2:52 PM REC# 290232 K# 1581 PG# 195
 DEBRA K. LATHROP, CLERK OF LARAMIE COUNTY, WY PAGE 1 OF 1

Date of Field Work: 11-15-2000 Office Reference: _____

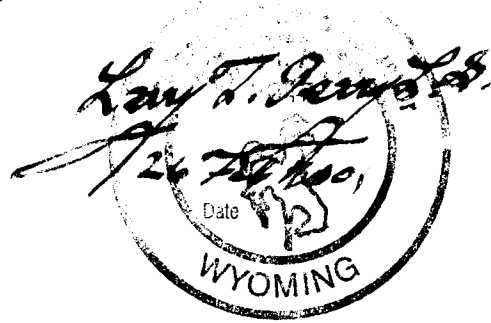
CROSS INDEX DIAGRAM

	1	2	3	4	5	6	7	8	9	10	11	12	13	14	15	16	17	18	19	20	21	22	23	24	25
A																									
B																									
C		6	5	4	3	2	1																		
D																									
E																									
F																									
G		7	8	9	10	11	12																		
H																									
J																									
K																									
L		18	17	16	15	14	13																		
M																									
N																									
O																									
P		19	20	21	22	23	24																		
Q																									
R																									
S																									
T		30	29	28	27	26	25																		
U																									
V																									
W																									
X		31	32	33	34	35	36																		
Y																									
Z																									

Firm/Agency, Address
 Larry, T. Perry, LS#3047
 1127 Terry Ranch Road
 Cheyenne, Wyoming 82007

This corner record was prepared
 by me or under my direction
 and supervision.
SEAL & SIGNATURE

Telephone Number: 634-9360
"Your Friendly Neighborhood Surveyor"



Corner Name: NW 1/16

Section: 14 T 14 N R 63W : 6th P.M. Cross-Index No.: K-18